



ALSANIT®

TECHNO WALL

Fast mounted and aesthetically pleasing wall claddings designed for large surfaces.

TECHNOWALL is a fully proprietary system of wall claddings with quick access to installations located behind them.

Material:

HPL - High Pressure Laminate

10 mm

12 mm

MFC - Laminated chipboard

18 mm

Description:


TECHNOWALL is available in a wide range of HPL and MFC decors. It can be configured with a visible or invisible panel between the cladding. Thanks to this, you can create extremely functional walls that add elegance and mask the access function to the installation.

Access to the installation is possible in two ways: by sliding the panels out of the system's waterproof frame and through

an opening door, locked with a patent lock.

HPL boards with a thickness of 12 mm have a standard flammability class of Bs1d0.

 tailor made to individual dimensions

 the possibility of custom built

 easy to clean



Easy access to installation



Modular structure

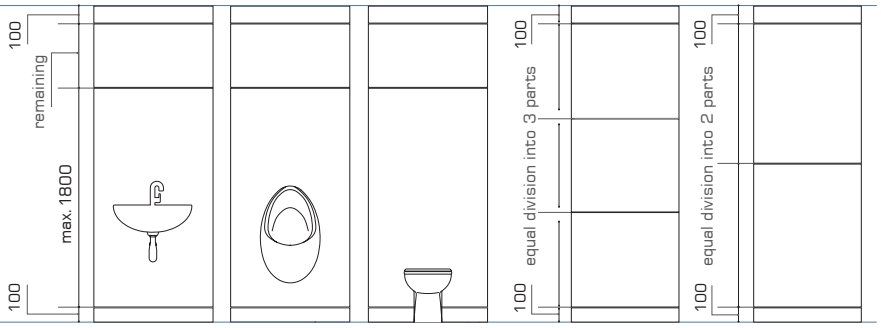


Developed by ALSANIT and produced in Poland

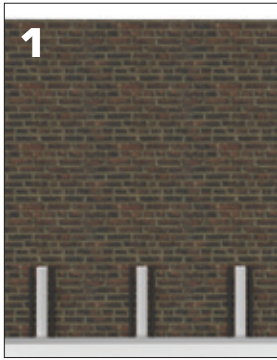


Production on CNC machines ensures precision and short lead times

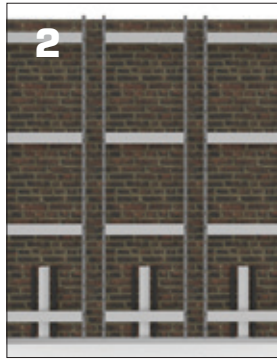
ceiling



Installation:



1. Level and mount the bottom profile to the floor.



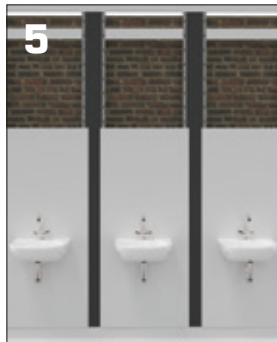
2. Place the steel frames for cladding on the profile, align, and attach them to the masonry wall.



3. Connect the frames with „shadow“ panels. Mount masking panels at the bottom and top.



4. Place the cladding panels up to the height of the connections / fixtures and cut openings for the connections / fixtures.



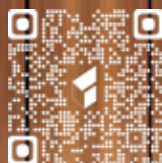
5. Secure and connect the fixtures to the cladding.



6. Install the remaining cladding.



ALSANIT®



www.alsanit.eu